

BLM RMP Public Comment Meeting for the Placitas-area BLM

**April 5, 2008
1:00pm – 3:30pm
Las Placitas Presbyterian Church**

Purpose of this Meeting

- **Discuss the Land-Use Options for Placitas and the Placitas-Area BLM**
- **Gather Citizen Inputs for the BLM Resource Management Plan Update**



Agenda

- **Meeting Ground Rules** Sandy Johnson
- **BLM Info** Sandy Johnson
- **Corridor Options (30 min)**
 - NE Highway Corridor (Loop Road) Cindy King
 - Energy Corridor Sandy Johnson
 - Wildlife Corridor: Elise Vanarsdale, Mitch Johnson
 - Wild Horse Park and Wildlife Corridor Patience O'Dowd
- **Water Considerations** Patience O'Dowd
- **Other BLM Possibilities/
Public Comment** You!
- **Next Steps**

BLM RMP Process

- **BLM's 7 Resource Planning Issues**

1. Land Tenure Adjustment
2. Mineral and Energy Development
3. Recreation and Visitor Service
4. Visual Resources Management
5. Special Area Designation (ACEC)
6. Travel and Trails Management
7. Public Land Urban Interface

Meeting Ground Rules

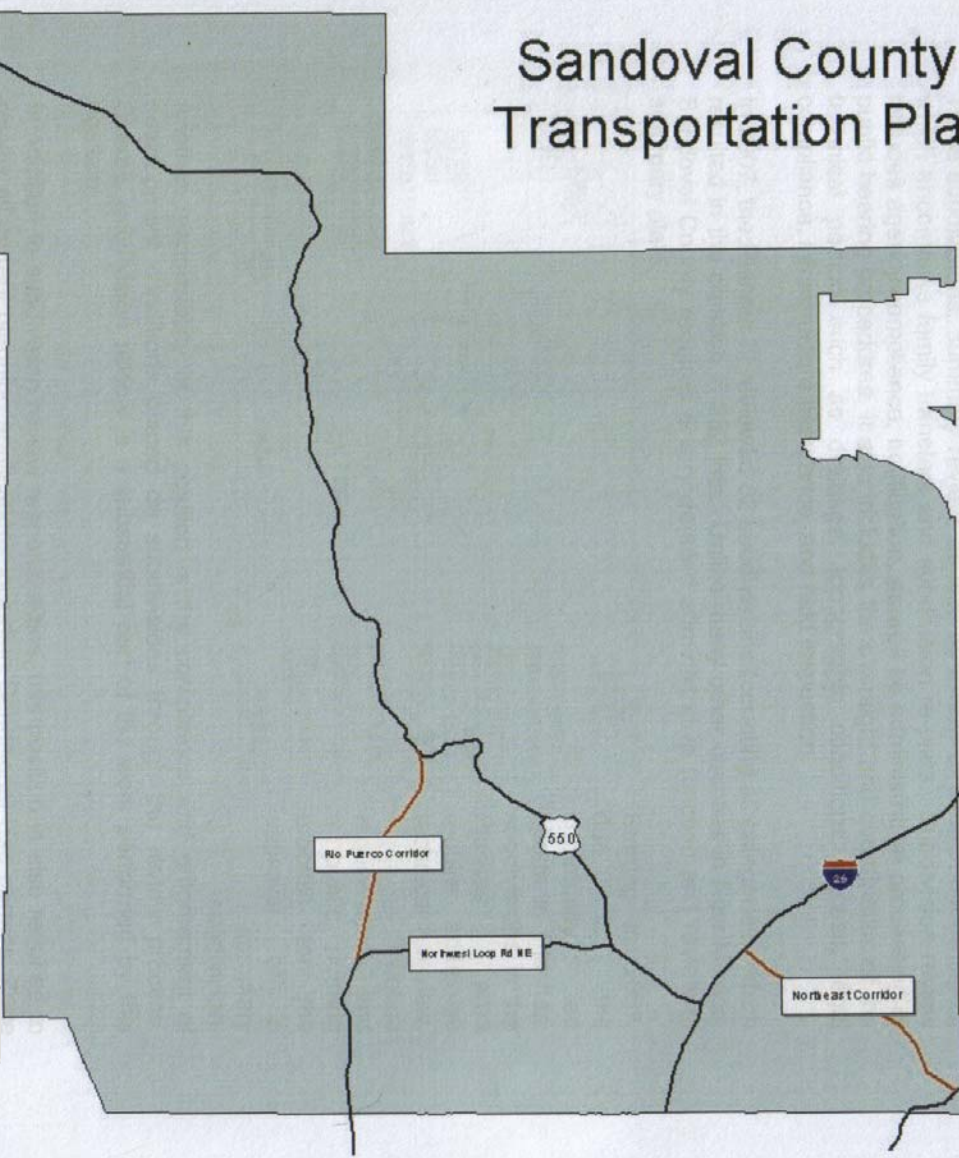
- **Moderated Discussion**
 - Be courteous to all speakers
- **Stay on Topic**
 - Persons wishing to speak
 - Sign-up
 - Limit comments to time period allocated
 - Restrict comments to the meeting agenda topics
 - Open discussions will be held at the end of the meeting
- **Recorded:**
 - This meeting is being video recorded for the BLM
 - We will be documenting your inputs for the BLM RMP

NE Highway Corridor (aka Loop Road)

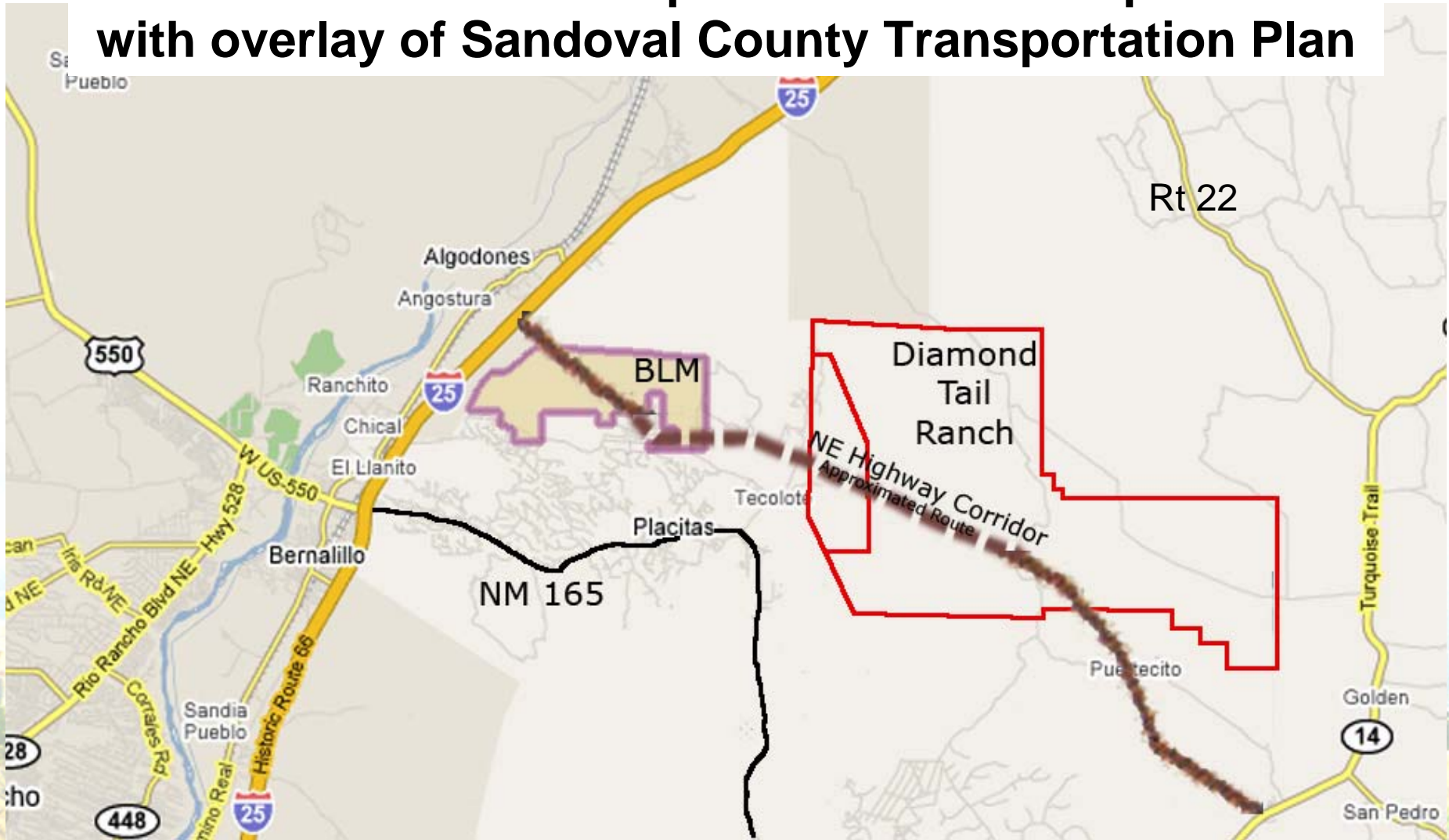
- **Previous NE Highway Corridor Studies and Conclusions**
 - North Area Transportation Study (by MRGCOG)
 - Conclusion (in late '90's): The idea was dropped.
 - NM State Hwy Dept (in 2001): Re-look at it in 20 yrs.
 - BLM, Santo Domingo, and San Felipe: Rt 22 was the best option to connect with Hwy14.
- **Sandoval County has taken this BLM RMP as an opportunity to bring up the Loop Rd.**
 - **Sandoval County Development Division 2007 Annual Report**
 - Shows a “Northeast Corridor” on pg 13. (see next slide)
 - Mike Springfield of the SC P&Z dept. has stated that this route is “conceptual only”.
 - **Sandoval County Map Overlay** (see slide after next)
 - “Conceptual route” vs existing alternative Rt 22.
 - The Loop Rd route as published in our Newsletter gave concern to residents in Phase I Diamond Tail, however, the County at the time had not provided any information that this mapped route was conceptual only.
 - Please note that we did err on some Diamond Tail boundaries and these minor corrections are shown here.

Sandoval County Transportation Plan

from the
"Sandoval
County
Development
Division 2007
Annual Report"



NE Corridor Map: Placitas-area map with overlay of Sandoval County Transportation Plan



NE Highway Corridor - continued

- **Additional Emergency Exit Road Needed?**
- **Existing Ingress/Egress**
 - Hwy 165 to I-25,
 - Hwy 165 to East Side of Mountain
 - Manzano to Frontage Rd.
- **Placitas Fire Chief Bud Brinkerhoff statement of 4/08**
 - “From the perspective of an evacuation for a major catastrophic event scenario, we have not identified the need for another ingress or egress from the Placitas community.”
 - “There are currently 6500 structures in Placitas, twice what it was 10 yrs ago.”
 - “In the future Hwy 165 as it exist today may not fulfill the evacuation needs. At that time, Hwy 165 may need widening to 4 lanes.”
 - Right now Emergency Services have adequate access to every Placitas Residence.

NE Highway Corridor - continued

- **Area Growth Projections**
 - High Growth Projections for Rio Rancho, Placitas, and East Mountains
 - The highways near Bernalillo will be grid locked with all the Rio Rancho growth as is.
- **Gridlock**
 - By plugging the traffic into one another we will gridlock the area with no possible solution due to the river and Indian lands.
- **Albuquerque Bypass**
 - Semi-Trucks would use it to bypass Albuquerque.
- **Real Estate**
 - A Loop Rd could take away everything developers market this area as being: quiet, pristine country living.

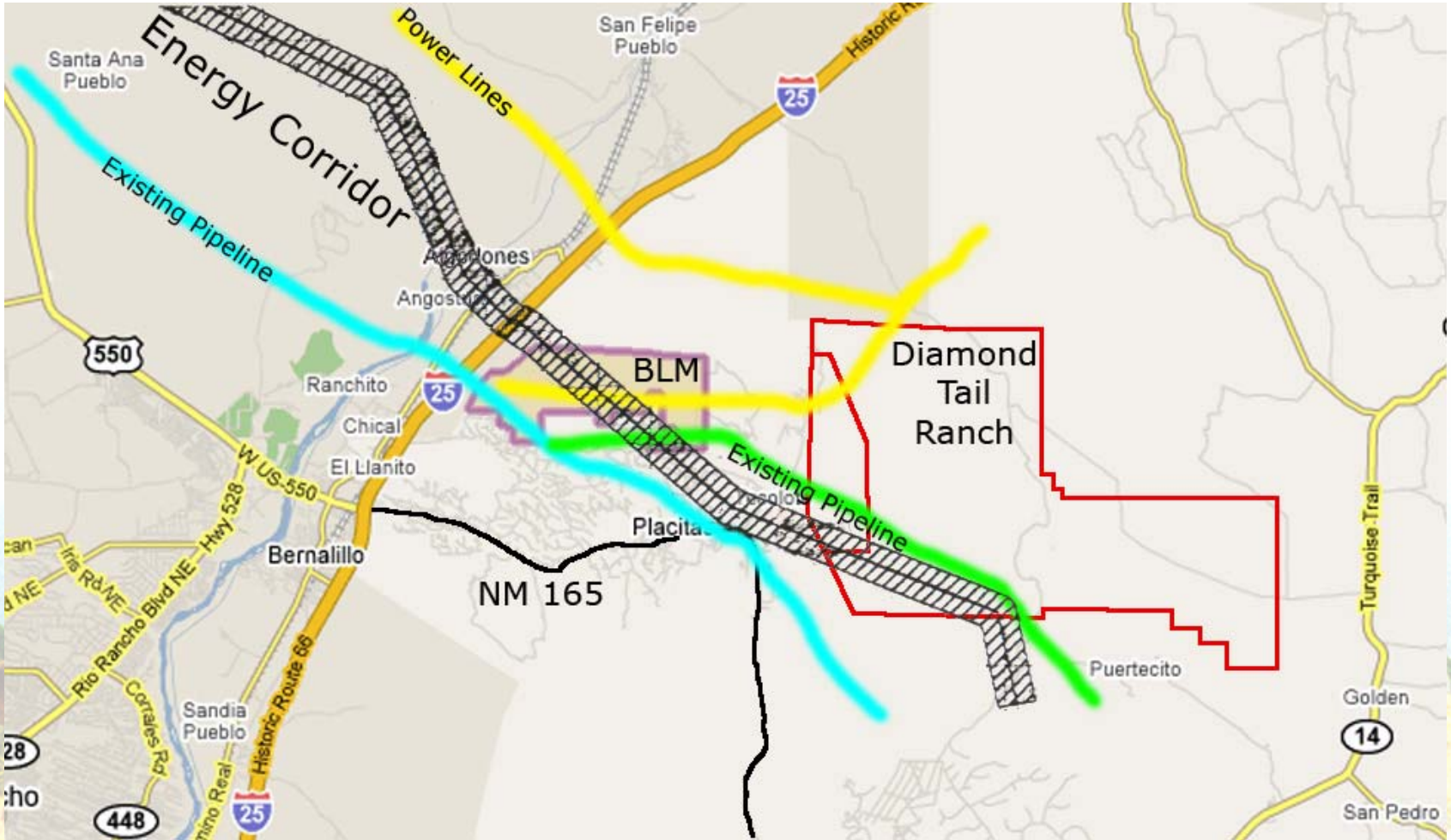
NE Highway Corridor - continued

- **Unplanned & Unregulated Development.**
 - If you put a road into an area the door is opened.
 - There are currently only mild regulations on development.
- **State Highway Dept Public Meeting Results from 2001:**
 - Residents in Placitas did not want a Loop Rd.
 - Back side of the mountain did not want the Loop Road.
- **Beneficiaries?**
 - Potential loss of private property a wild card for all.
 - Any Loop Rd through BLM has to take private property.
 - Few interests will be served with this Loop Rd
- **WHOA Survey Results:**
 - Over 98% Placitans still do not want a Loop Rd (over 600 survey and coalition respondents)

West-Wide Energy Corridor Status

- **Stated Purpose:**
 - “Facilitate future site of oil, gas, and hydrogen pipelines and electric transmission and distribution facilities...to help address growing energy demand”
- BLM states that although the energy corridor may be designated to a particular route, if the county government has other energy corridors existing, the BLM can and will “steer the vendors” to the existing sites.
- Representative Udall has asked for a Congressional Hearing regarding New Mexico’s concerns.
- **Congressional Hearings begin in April 2008**

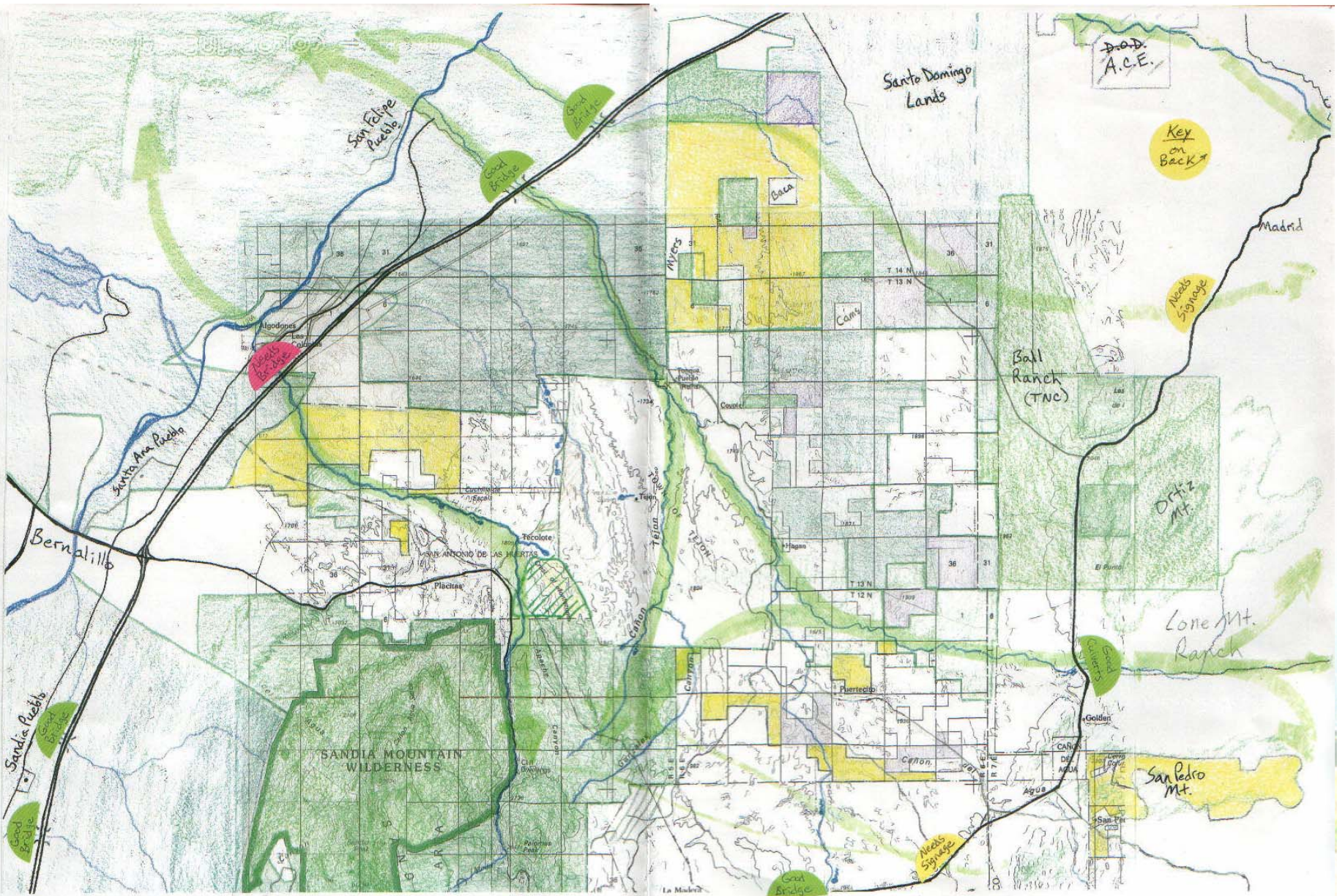
Map: West-Wide Energy Corridor



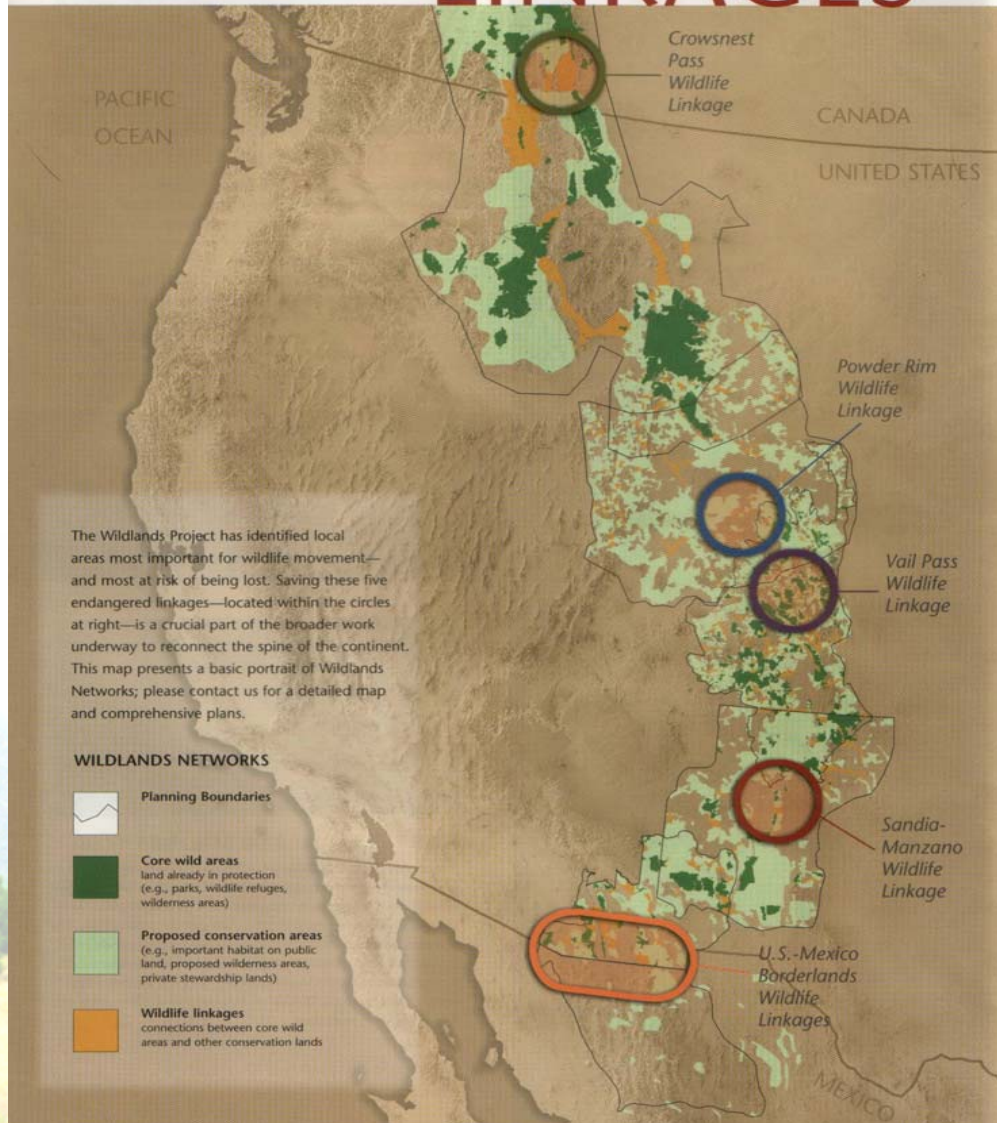
Wildlife Corridor

- **Where are the Wildlife Corridors**
- **Connecting the Mountains**
- **How to participate**
 - Mural Project Signups
 - Citizens Scientist
 - Wildlife data collection sign-up
 - Sign-up to work the NM wilderness alliance swap





ENDANGERED LINKAGES



WILDLIFE DATA SHEET PATHWAYS: SANDIA

Mo/Dy/Yr	TIME	LOCATION and direction of travel	Animal Specs <input type="checkbox"/>			Live/ Dead or Tracks:	Notes:
			age	sex	specie		

Reported By:

Phone:

E-mail:

Age: A=Adult/ Y=Young

Lynx are rare yet may be recognized by: size, long legs, snow shoe feet, or beard.

Photograph if possible and report a dead Lynx to State Game & Fish.

Bear



Mountain Lion



Lynx



Bobcat



Elk



Dear



Antelope



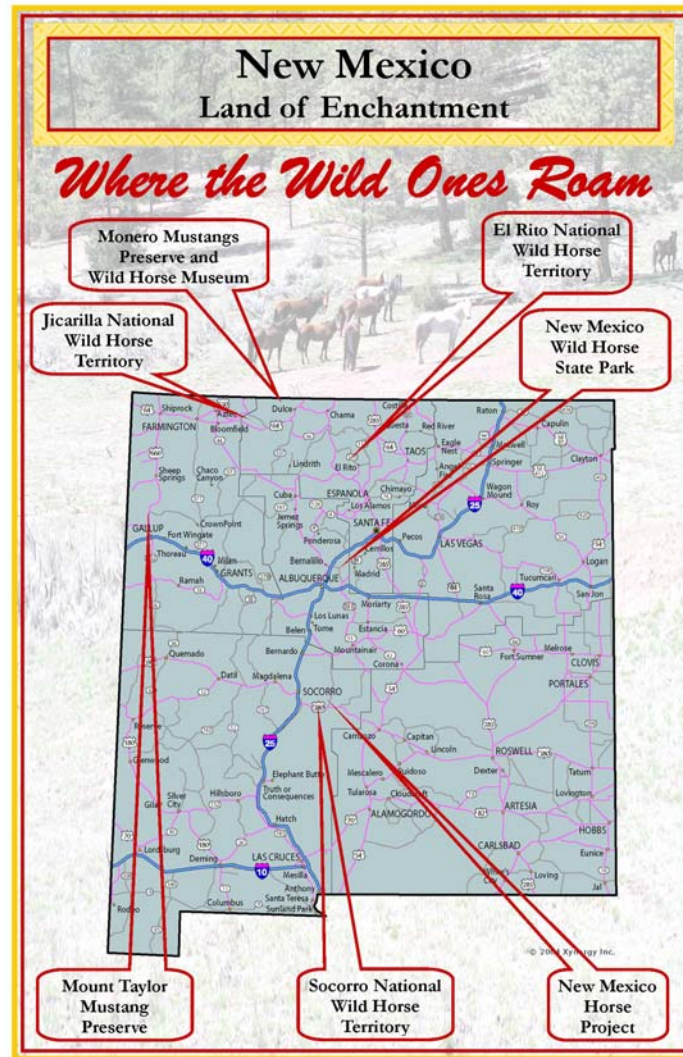
Wild Horse Park and Wildlife Corridor



Wild Horse Park and Wildlife Corridor - continued



Wild Horse Park and Wildlife Corridor - continued



Wild Horse Park and Wildlife Corridor - continued

New Mexico Wild Horse State Park

To Santa Fe and San Felipe,
Santo Domingo, Cochiti Pueblos

To Albuquerque and Sandia Pueblo

To Zia and Jemez Pueblos

To Rio Rancho and Corrales

New Mexico Wild Horse State Park

1

2

Historic Village of Placitas

To Albuquerque and Sandia Pueblo

A Vacation Destination Along Historic Route 66

Local Businesses and Services of Placitas, Bernalillo, Santa Ana Pueblo, and San Felipe Pueblo

- Parks/Museums**
 1. NM Wild Horse State Park
 2. Albuquerque Open Space
 3. Coronado State Monument and Park
 4. Cibola National Forest
 5. Sandoval Historical Society
 6. McNulty Riding Stables
 7. Hector Ramos Riding Lessons/Training
 8. Holly Farms (Riding)
 9. Tamaya Resort (Riding)
 10. Bernalillo Feed
 11. The Merc (Feed)
- Casinos**
 36. Santa Ana Star Casino
 37. San Felipe Hollywood Casino
 38. Sandia Casino
- Horse Riding/Feed**
 6. McNulty Riding Stables
 7. Hector Ramos Riding Lessons/Training
 8. Holly Farms (Riding)
 9. Tamaya Resort (Riding)
 10. Bernalillo Feed
 11. The Merc (Feed)
- Veterinarians**
 39. Sunrise Vet
 40. Middleton Equine
- Groceries**
 41. Placitas Mercantile
 42. The Merc
 43. Albertsons
- Lodging**
 12. Days Inn
 13. Super 8
 14. Tamaya Resort
 15. Blue Horse Bed & Breakfast
 16. Sandia
 17. KOA Campgrounds
 18. Coronado State Park
- Restaurants**
 19. Guang Dong
 20. The Range
 21. Denny's
 22. Coronado Grill
 23. Abuelita's
 24. Capos Italian
 25. Prairie Star
 26. Tamaya Resort
- Cafe/Winery**
 27. Pinon Cafe
 28. Starbucks
 29. Dunkin Donuts
 30. Anasazi Winery
- Photography/Art**
 31. Callahan Wild Horse Photography
 32. Iluminaria Wild Horse Photography
 33. Rock n Art Gallery
 34. Joan Fenicle Studio
 35. Laura Robbin's Wild Horse Mosaics
- Casinos**
 36. Santa Ana Star Casino
 37. San Felipe Hollywood Casino
 38. Sandia Casino
- Veterinarians**
 39. Sunrise Vet
 40. Middleton Equine
- Groceries**
 41. Placitas Mercantile
 42. The Merc
 43. Albertsons
- Pueblos/Villages**
 44. Santa Ana Pueblo
 45. San Felipe Pueblo
 46. Sandia Pueblo
 47. Santo Domingo Pueblo
 48. Cochiti Pueblo
 49. Zia Pueblo
 50. Historic Village of Placitas
- Recreation**
 51. Santa Ana Golf Club
 52. Twin Warriors Golf Club
- Transportation**
 53. RailRunner
 54. Sandoval Express Bus
- Realty**
 55. Placitas Realty
 56. La Puerta Realty
 57. Sierra Realty

WILD HORSE
Observers Association
& The Placitas Coalition

21

**BLM RMP Public Comment Meeting
for the Placitas-area BLM**

Wild Horse Park and Wildlife Corridor - continued

- **Wild Horses!**
 - These horses have been here for Centuries, they are part of our enchantment. We have grey and white pintos, roans of all colors.
 - They are an asset to the state, but their habitat is shrinking.
- **Heritage Tourism**
 - The second largest industry in the US and in NM. Of that 81% is Heritage Tourism.
 - In NM it is a 2.5 Billion dollar industry and the largest private sector employer.
 - These horses could provide rural economic development for the state.
- **Legislative Championship**
 - State Senator Komadina has championed our cause passing substantive legislation making our horses legally wild.
 - Governor Richardson and our State Legislature understand Rural Economic Development and so have passed several pieces of legislation that
 - Make our State's wild horses, such as our Placitas Wild Horses, legally wild
 - Asks the BLM to preserve and protect them where they exist.
 - Most of these bills passed unanimous.

The most recent legislation could enable the state of NM to acquire this 5000 acres for a mere \$25K, the cost of a fiscal analysis.

Wild Horse Park and Wildlife Corridor - continued

- **Placitas Coalition / WHOA Survey**

- Placitas Coalition

- Placitas Chamber of Commerce,
- Democratic Women of Sandoval Co.
- Most of the businesses, including The Café and The Hair Salon
- Many Home Owners Associations
- Most of the Realtors and Developers
- Hispano Round Tale, and it's 60 member organizations around the state,
- The American GI Forum

- WHOA Survey

- 600 and counting Placitans have responded with many more joining everyday.
- ***98% of respondents from Placitas want the BLM to be a wild horse/ wild life park for people to enjoy in perpetuity.***

- **Many Wild Horse Park Options!**

- NM State Park (Docent Program)
- BLM (ACEC) Area of Critical Environmental Concern
- Remove from all permit applications such as mining etc.

Wild Horse Park and Wildlife Corridor - continued

Concerns Raised regarding a Wild Horse Park:

- Fiscal analysis/Wild Horse Mgt costly (as per Signpost article)
 - State Parks and Recreation Dept. has already agreed to do the fiscal analysis by the end of summer.
- Does the BLM consider the horses Feral or Wild?
 - The State law that declares them Wild Horses supercedes Federal law in this matter.
 - Special Thanks to Governor Richardson and Senator Komadina for championing and signing this legislation.
- Sufficient Existing BLM access points?
 - Rosa Castilla, La Mesa, and Llano del Norte
 - Has more access points than Albuquerque Open Space
- Effect on Property Values
 - Reduces Uncertainty
 - Enhances property values for the many for the long term future.

Water Summary

Diverse Region: Over-Spending Its Water

Placitas Overview:

- **Extensive 2002 Peggy Johnson Hydrogeology Report**
 - New Mexico Tech Report OF-469 – Available in Placitas Library
- **Characteristics Vary Greatly from Place to Place**
- **Laced with Geological Faults - “Shoebox Aquifers”**
 - Some Sources Disconnected, Others Cover Wide Areas
 - Some Water in Rock Cracks, Some in Sandy Soils
- **Residence Time of Groundwater**
 - Some Ancient / Mined; Some Renewed by Recent Precipitation
 - Age in Ground Ranges from 6 Months to 35,000 Years
- **Slow Underground Flows - Generally toward Rio Grande**

Other BLM Possibilities: You Choose

- ***Wildlife / Wild Horse Open Space/Park***
- Real Estate Development
- Gravel Pit Mining
- ATV Park
- Shooting Range
- Cattle Grazing
- Oil and Gas Development
- Commercial Development
- ***Highway Route***
- ***Energy/Pipeline Corridor***
- Native American Property - possibly as Open Space for Wildlife w/ local access
- Native American Property - for Business Development

Placitas Community Meeting

Next Actions:

- **Attend the Bernalillo BLM Meeting**
(showing up is half the battle)
- **Sign-up to be kept “in the loop”**
- **Consider Volunteering**
 - Citizen Scientific Training and Assignments
 - Wildlife Mural Project
 - Track Recorder
 - State Park Planning

Next BLM RMP Public Meeting

Tuesday, April 8th

6:00pm – 8:00pm

Bernalillo High School Gym

- Report out from Wednesday April 2nd Albuquerque Meetings
 - Provides for NO Verbal Comments
 - Questions answered by Resource Specialist in the each of the 7 Issue Areas